

Special size W72×H36mm Indicator of Counter/ Timer type

■ Features

- W72×H36mm
- Switching power supply from 100 to 240VAC 50/60Hz, 12 to 24VDC (Option)
- Selectable counter function or timer function .
- Indicator only.



■ Ordering information

Indicator Counter/Timer

Digit	Model
4Digit	FX4Y-I
6Digit	FX6Y-I

FX 4 Y - I

I	Indicator
Y	DIN size W72×H36mm
4	9999(Digit)
6	999999(Digit)
FX	Built-in MICOM Indicator Counter/Timer type

■ Rating

Series		FX Y	
Digit		4	6
Model	Single preset	—	—
	Double preset	—	—
	Indicator	FX4Y-I	FX6Y-I
Power supply		100 to 240VAC 50/60Hz, 12 to 24VDC (Option)	
Operation voltage		90 to 110% rated voltage	
Power consumption		About 4VA	
Max. counting speed for CP1,CP2		Selectable 30cps, 2Kcps by inner DIP switch	
Min. signal width	INHIBIT input RESET input	Min. 20mS	
Input	CP1,CP2 input	Impedance by shot-circuiting contacts:Max. 1KΩ Residual voltage:Max. 0.5V	
	RESET input	Impedance by opening:Min. 100KΩ Input Impedance:20KΩ	
Memory retention		10 years	
Power for external sensor		12VDC ±10% 50mA Max.	
Ambient operating temperature		-10 to 55℃ (at non-freezing status)	
Ambient storage temperature		-25 to 65℃ (at non-freezing status)	
Ambient humidity		35 to 85%RH	

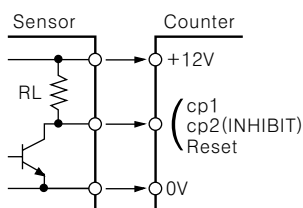
■ Characteristic

Insulation Resistance		100MΩ Min(at 500VDC) between power input terminal and control output terminal
Dielectric strength		2000VAC 50/60Hz for 1 minute between power input terminal and control output terminal
Impulse voltage		2KV(Between terminals of power)
Noise		The square wave noise(pulse width:1μs) by the noise simulator
Static electricity		8KV
Vibration	Mechanical durability	10 to 55Hz(cycle:1minute) 0.75mm double amplitude at X,Y,Z direction for 1 hour
	Malfunction durability	10 to 55Hz(cycle:1minute) 0.5mm double amplitude at X,Y,Z direction for 10 min.
Shock	Mechanical durability	Min. 300m/S ² (30G) 3turns at X,Y,Z direction
	Malfunction durability	Min. 100m/S ² (30G) 3turns at X,Y,Z direction
Weight		About 147g About 146g
Approval		File No:E141946

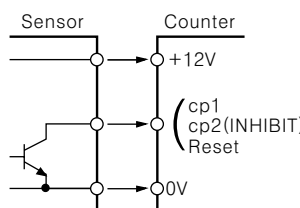
*The weight of above chart is net weight.

■ Input connection

◎Solid-State input *Standard input sensor:NPN output

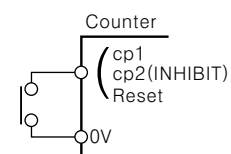


- Transistor ON → counting
- NPN universal output type sensor



- Transistor ON → counting
- NPN open collector output type sensor

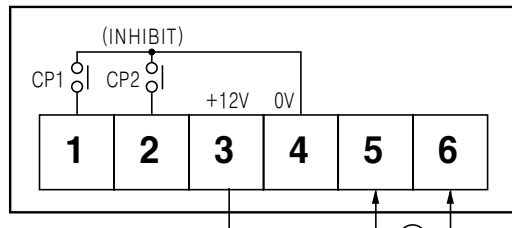
◎ Contact input



- Contact ON → counting
- Remit S/W, micro S/W
- Please use a reliable contacts enough to turn on/off at Max. 5VDC 100μA

FX4Y SERIES

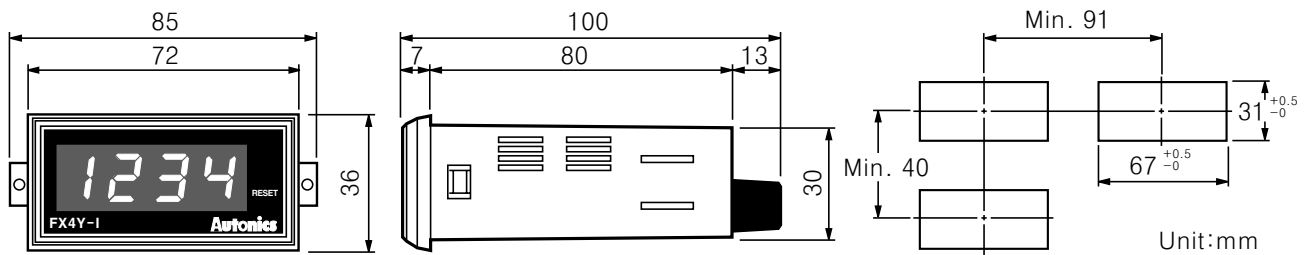
Connection



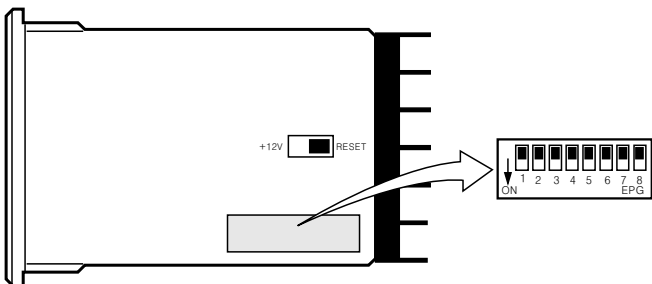
※ CP1 CP2 = COUNTER
 ※ INHIBIT(CP2) = TIMER

It can be selected reset or sensor power(+12V 50mA) by inner slide switch.

Dimension



Selection by DIP switches



Max. Counter speed selection

SW1	Function
OFF	CP1, CP2
ON	30cps
OFF	2Kcps
ON	

Manual RESET selection

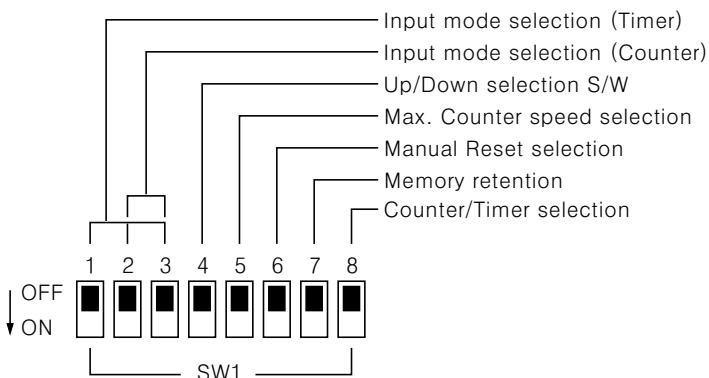
SW1	Function
OFF	It can not use reset S/W
ON	It can use reset S/W

Memory retention

SW1	Function
OFF	Memory
ON	Power reset(non memory)

Counter/Timer type

SW1	Function
OFF	Timer
ON	Counter



Up/Down selection

SW1	Function
OFF	Up mode
ON	Down mode

Input mode(Counter)

SW1	Mode	Up mode	SW1	Mode	Down mode
	A			D	
	B			E	
	C			F	

Time setting mode(Timer)

SW1	4Digit	6Digit	SW1	4Digit	6Digit
A			E		
	99.99sec	99999.9sec		999.9min	99999.9min
B			F		
	999.9sec	999999sec		99hour 59min	99hour 59min 59sec
C			G		
	9999sec	99min 59.99sec		999.9hour	9999hour 59min
D			H		
	99min 59sec	999min 59.9sec		9999hour	99999.9hour